

Natura Clad-Classic 92 Thermal Performance Report

Date: 12/17/2019  
 Type: Fixed Window  
 Glass: 48mm Planitherm XN (#2, #5), 4/18/4/18/4

### North American Standard

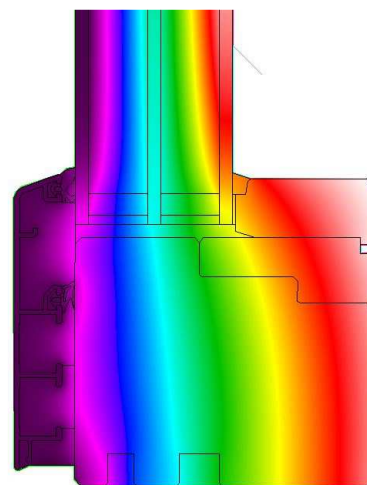
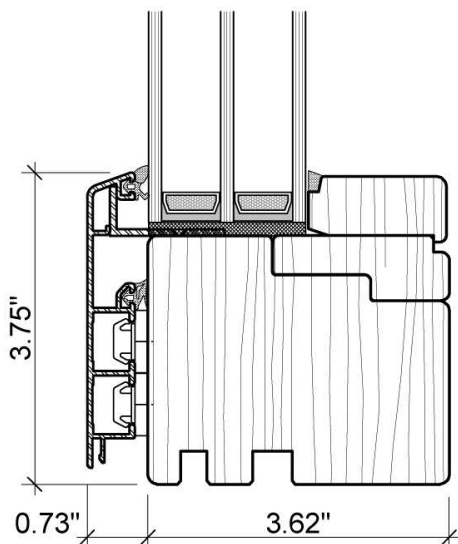
Performance values modeled with LBNL THERM & Window7 per NFRC 100 & 200  
 47" x 59" Window size @ standard 0°F exterior temperature

Glass:	Ug = .126 Btu/hr-ft <sup>2</sup> F	SHGC = .51	VLT = .74	
Window:	Uw = .146 Btu/hr-ft <sup>2</sup> F	SHGC = .38	VLT = .54	CR = 76

### European Standard

Performance values modeled with LBNL THERM & Window7 per ISO 673 / EN 673  
 48" x 58" Window size @ standard 32°F exterior temperature

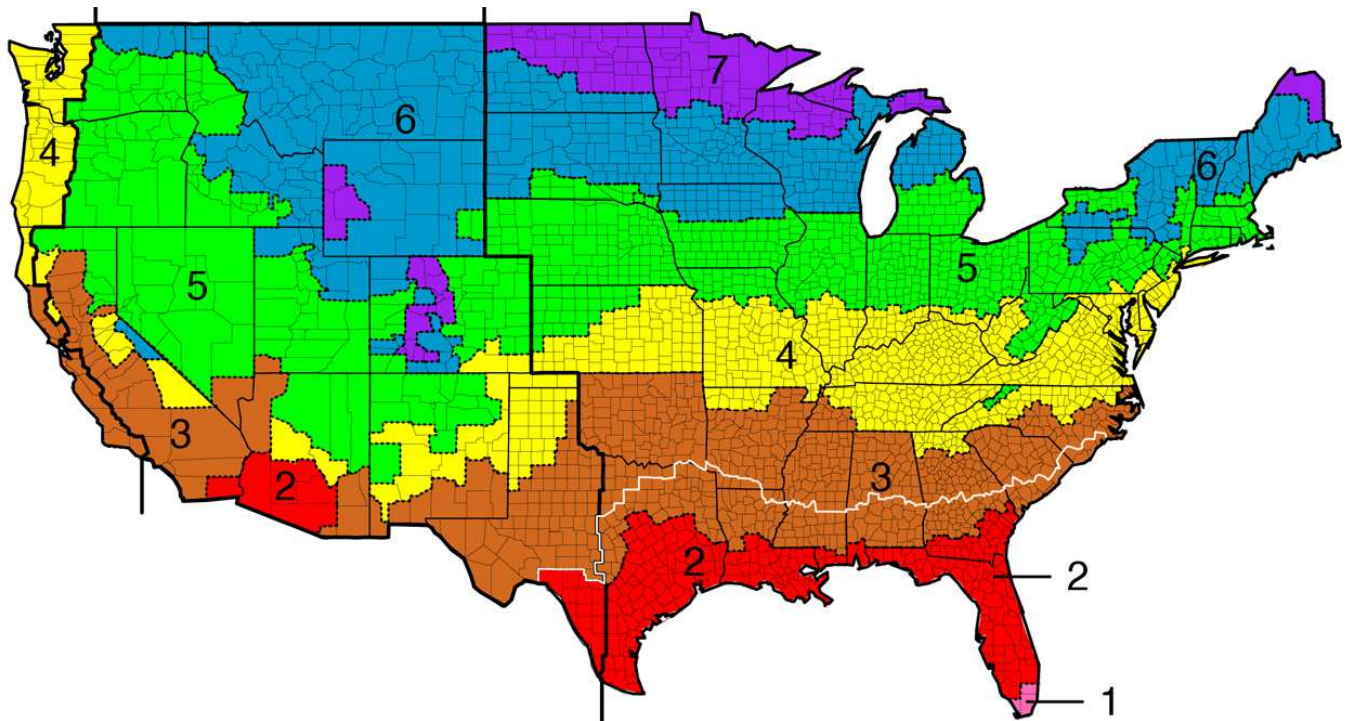
Frame:	Uf = .163 Btu/hr-ft <sup>2</sup> F	Frame (sill):	Uf = .172 Btu/hr-ft <sup>2</sup> F
Spacer:	Ψ = .0141 Btu/hr-ft-F	Spacer (sill):	Ψ = .0119 Btu/hr-ft-F
Glass:	Ug = .097 Btu/hr-ft <sup>2</sup> F		
Window:	Uw = .126 Btu/hr-ft <sup>2</sup> F		



Natura Clad-Classic 92 Thermal Performance Report

### Climate Specific Performance

Performance values modeled with LBNL THERM & Window7 per ISO 673 / EN 673  
48" x 58" Window size @ climate specific winter exterior temperatures



Frame:  $U_f = .162$  Btu/hr-ft<sup>2</sup>F      Frame (sill):  $U_f = .172$  Btu/hr-ft<sup>2</sup>F  
 Spacer:  $\Psi = .0138$  Btu/hr-ft-F      Spacer (sill):  $\Psi = .0138$  Btu/hr-ft-F  
 Glass: SHGC = .51

Climate Zone	Glass U-Value Btu/hr-ft <sup>2</sup> F	Window U-Value Btu/hr-ft <sup>2</sup> F
Zone 7 (10°F)	.112	.137
Zone 6 (25°F)	.103	.130
Zone 5 (28°F)	.100	.128
Zone 4 (36°F)	.096	.125